

**MEDICAL
SUITES
-FOR-
LEASE**

**799 Bloomfield Ave,
Verona, NJ 07044**

AVAILABLE SUITES

1ST FLOOR - 3,227 SQ. FT.

3RD FLOOR - 1,442 SQ. FT.

RATE AVAILABLE ON REQUEST, FOR FURTHER INFO CONTACT EXCLUSIVE AGENT

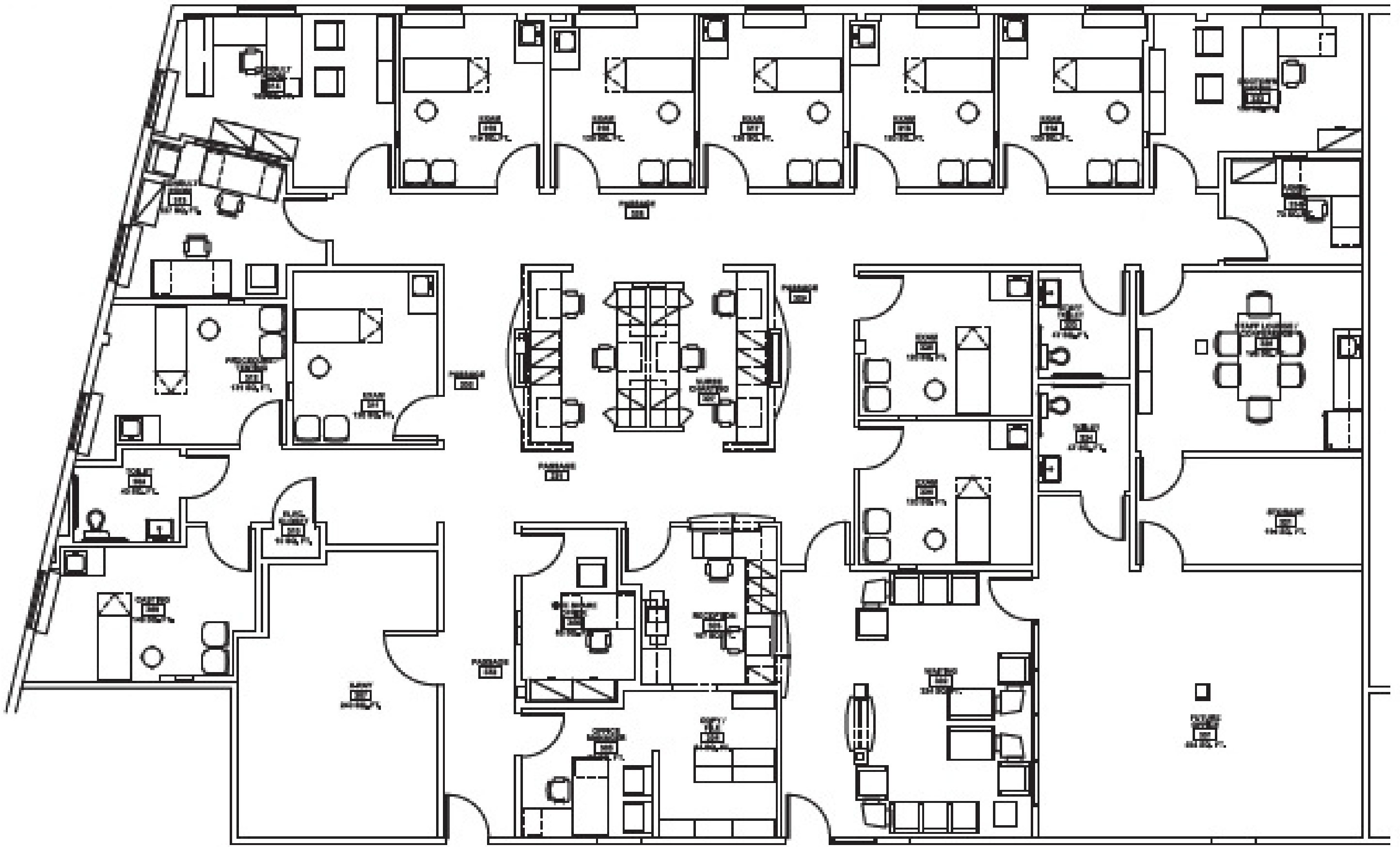
**KALMON DOLGIN
AFFILIATES INC.**

101 RICHARDSON STREET
BROOKLYN , NEW YORK 11211
718.388.7700
www.kalmondolgin.com

**NYC'S LEADING
INDUSTRIAL
& COMMERCIAL
BROKERAGE
SINCE 1904**



Typical Floor Plan



799 Bloomfield Ave,
Verona, NJ 07044

FLOORPLAN



All information furnished regarding property for sale or rental is from sources deemed reliable but no warranty or representation is made as to accuracy thereof and same is submitted subject to error omissions, change of price, rental or other conditions, prior sales, lease or withdraw without notice.



799 Bloomfield Ave, Verona, NJ 07044

-FOR LEASE-

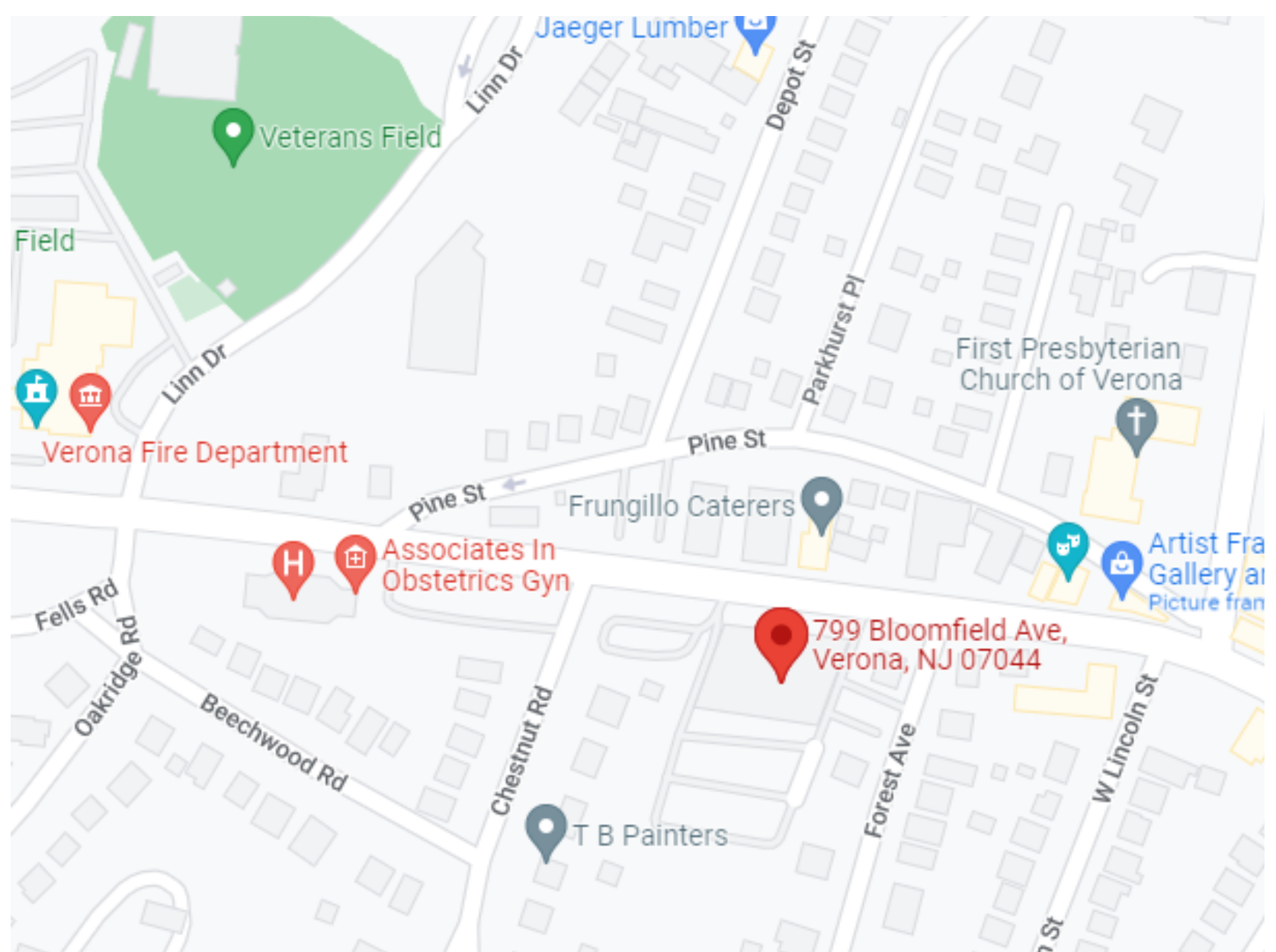
AVAILABLE SUITES:

1ST FLOOR - 3,227 SQ. FT.

3RD FLOOR - 1,442 SQ. FT.

SUITE HIGHLIGHTS:

- Features many exam rooms and private offices
- Great for a multitude of medical specialties
- Fully Air Conditioned
- Full build out available



Kalmon Dolgin
AFFILIATES INC.

FOR A TOUR OR ADDITIONAL INFORMATION PLEASE CONTACT:

JOSH DOLGIN

718-388-2332

JOSH@KALMONDOLGIN.COM

DAVID FRIEDMAN

914-844-2490

DFRIEDMAN@KALMONDOLGIN.COM

All information furnished regarding property for sale or rental is from sources deemed reliable but no warranty or representation is made as to accuracy thereof and same is submitted subject to error omissions, change of price rental or other conditions, prior sales, lease or withdraw without notice.