



Kalmon Dolgin
AFFILIATES INC.

310
E Shore Road
GREAT NECK, NY, 11023

MODERN
MEDICAL/PROFESSIONAL
SUITES
FOR LEASE



Kalmon Dolgin Affiliates presents for lease office suites located in a 3-story, class A medical / professional building. This impressive waterfront property not only offers a stunning backdrop of scenic views but also boasts ample parking for your convenience.

The building has an onsite super, back up generator, and is move in ready or build to suit.

NEW BUILDING UPGRADES:

- Common Area - Floors - Walls
- Ceiling Tiles - LED Lights
- Exterior & Interior Security Cameras
- Common Area - Bathrooms
- Parking Lot & More!

SUITES AVAILABLE:

- Suite 300 ~ 1,489 SF
- Suite 301 ~ 1,951 SF
- Suite 302/306 ~ 8,379 SF
- Suite 305A ~ 985 SF
- Suite 309 ~ 1,201 SF



101 RICHARDSON ST. | BROOKLYN, NY 11211

718.388.7700

WWW.KALMONDOLGIN.COM

All information furnished regarding property for sale or rental is from sources deemed reliable but no warranty or representation is made as to accuracy thereof and same is submitted subject to error omissions, change of price rental or other conditions, prior sales, lease or withdraw without notice.



Kalmon Dolgin
AFFILIATES INC.

310
E Shore Road
GREAT NECK, NY, 11023

PHOTOS



101 RICHARDSON ST. | BROOKLYN, NY 11211

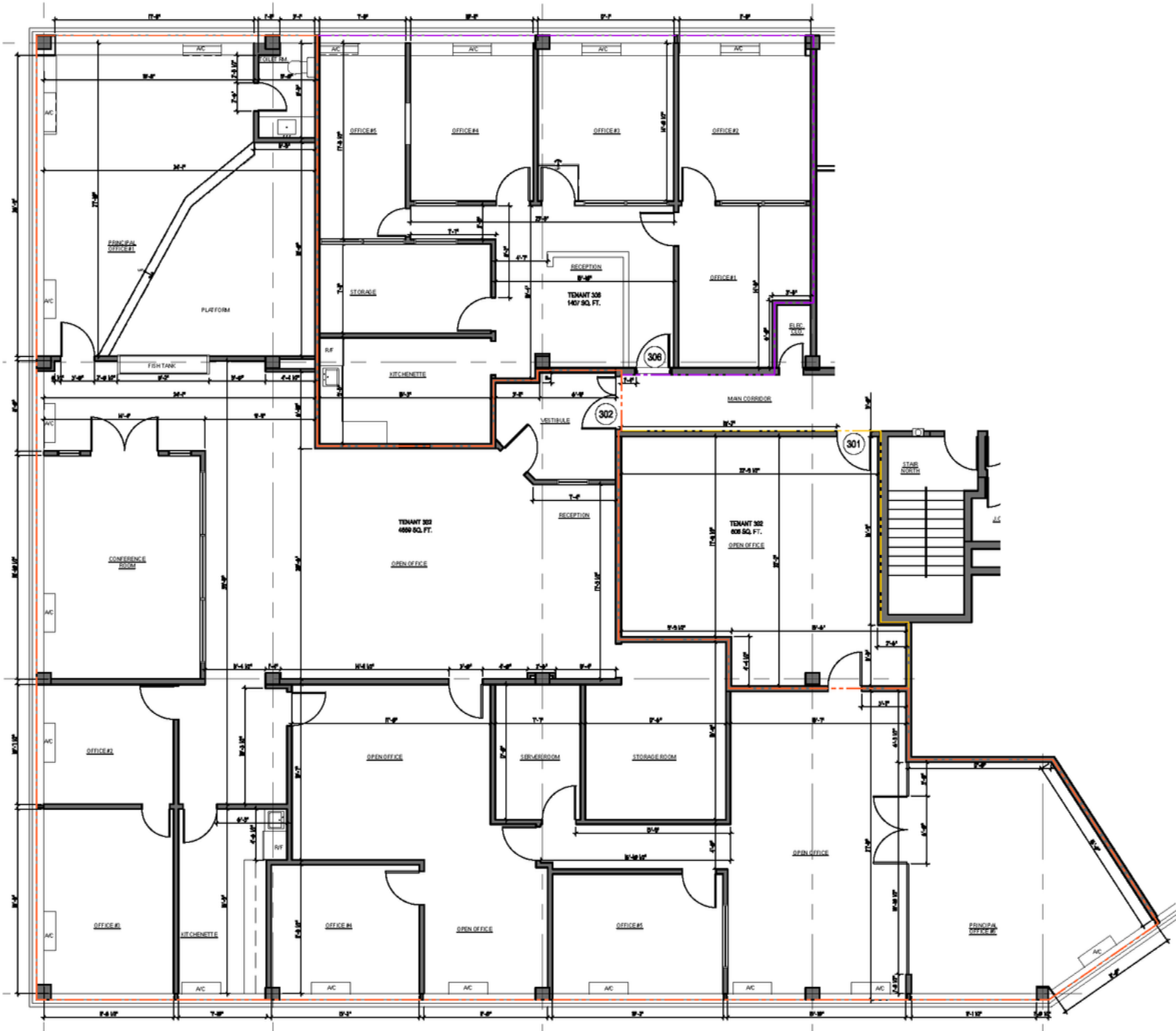
718.388.7700

WWW.KALMONDOLGIN.COM

All information furnished regarding property for sale or rental is from sources deemed reliable but no warranty or representation is made as to accuracy thereof and same is submitted subject to error omissions, change of price rental or other conditions, prior sales, lease or withdraw without notice.



FLOORPLAN

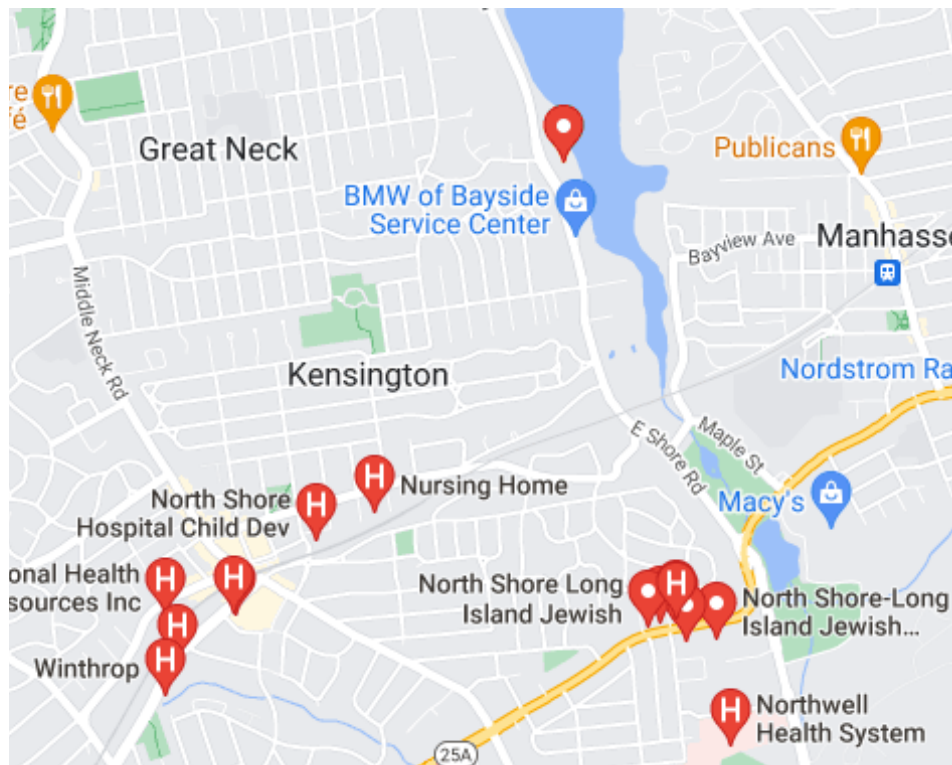




Kalmon Dolgin
AFFILIATES INC.

310
E Shore Road
GREAT NECK, NY, 11023

MAP &
DEMOGRAPHICS



Great Neck, NY is home to a population of 10.2k people
Average Household Income \$170,476. Many local hospitals in close proximity.

FOR MORE INFORMATION CONTACT
LICENSED REAL ESTATE
ASSOCIATE BROKER
GRANT DOLGIN
(DIRECT) 347-390-1166
GDOLGIN@KALMONDOLGIN.COM