



Kalmon Dolgin
AFFILIATES INC.

87

**RICHARDSON ST.
BROOKLYN, NY 11211**

**OFFICE SUITE
5,000 SF - 10,000 SF
-FOR LEASE-**



Welcome to 87 Richardson Street, a mixed-use building situated in the vibrant heart of Williamsburg, located across the street from McCarren Park. In this newly renovated loft building there is a 10,000 SF suite for lease; 5,000 SF division also available. Renovations include new windows, lobby and elevator. Tons of natural light. Perfect for design, creative, office, light manufacturing or tech uses.

LOCATION:

Located in Williamsburg, Brooklyn conveniently accessible to L train stations at Graham & Bedford Ave. This bustling neighborhood is home to many retail shops, hotels & trendy restaurants.

**CAFE - HVAC - 24/7 ACCESS
PRIVATE RESTROOM
IDEAL FOR VARIETY OF BUSINESS USES**

**FOR MORE INFORMATION
CONTACT**

JOSH DOLGIN

**(OFFICE) 718-388-2332
JOSH@KALMONDOLGIN.COM**



101 RICHARDSON ST. | BROOKLYN, NY 11211

718.388.7700

WWW.KALMONDOLGIN.COM

All information furnished regarding property for sale or rental is from sources deemed reliable but no warranty or representation is made as to accuracy thereof and same is submitted subject to error omissions, change of price rental or other conditions, prior sales, lease or withdraw without notice.

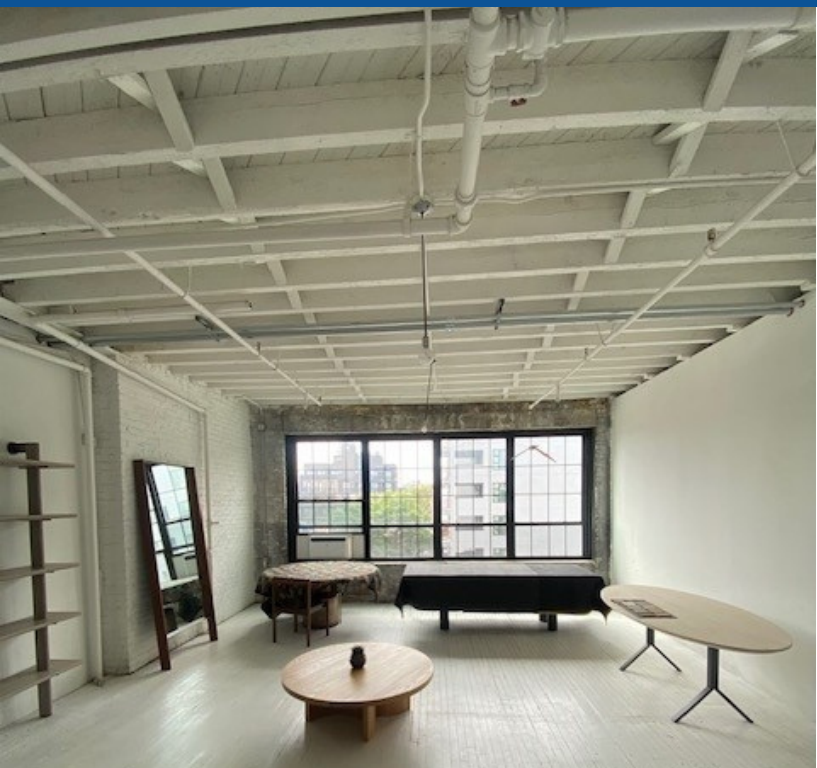


Kalmon Dolgin
AFFILIATES INC.

87

**RICHARDSON ST.
BROOKLYN, NY 11211**

ADDITIONAL PHOTOS



101 RICHARDSON ST. | BROOKLYN, NY 11211

718.388.7700

WWW.KALMONDOLGIN.COM

All information furnished regarding property for sale or rental is from sources deemed reliable but no warranty or representation is made as to accuracy thereof and same is submitted subject to error omissions, change of price rental or other conditions, prior sales, lease or withdraw without notice.



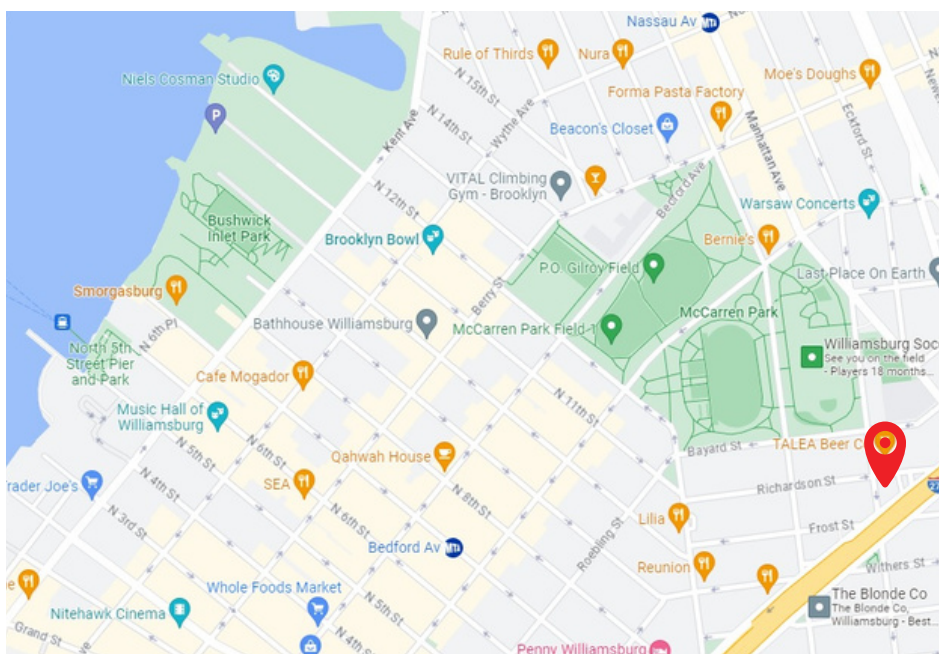
Kalmon Dolgin

AFFILIATES INC.

87

RICHARDSON ST.
BROOKLYN, NY 11211

LOCATION



FOR MORE INFORMATION CONTACT
JOSH DOLGIN
(OFFICE) 718-388-2332
JOSH@KALMONDOLGIN.COM

These sun filled office suites are located in the heart of trendy East Williamsburg, Brooklyn. Located right off the BQE, public transportation is convenient as well, with the L train at Bedford Ave. The first floor tenant is a local favorite café/brewery Talea. There is much to do like take a stroll at McCarren Park which is directly across the street. Williamsburg draws the young and the fashionable to its chic boutiques, trendy cafes and buzzy restaurants. Street art brightens residential thoroughfares and repurposed factories, while the waterfront provides stunning views of Manhattan and seasonal venues for outdoor concerts and food markets. Dance clubs, bars and music halls liven up the nightlife scene.

Don't miss out on your chance to be a part of Brooklyn's hottest neighborhood!



101 RICHARDSON ST. | BROOKLYN, NY 11211

718.388.7700

WWW.KALMONDOLGIN.COM

All information furnished regarding property for sale or rental is from sources deemed reliable but no warranty or representation is made as to accuracy thereof and same is submitted subject to error omissions, change of price rental or other conditions, prior sales, lease or withdraw without notice.



Kalmon Dolgin
AFFILIATES INC.

87

**RICHARDSON ST.
BROOKLYN, NY 11211**

FLOOR PLAN

