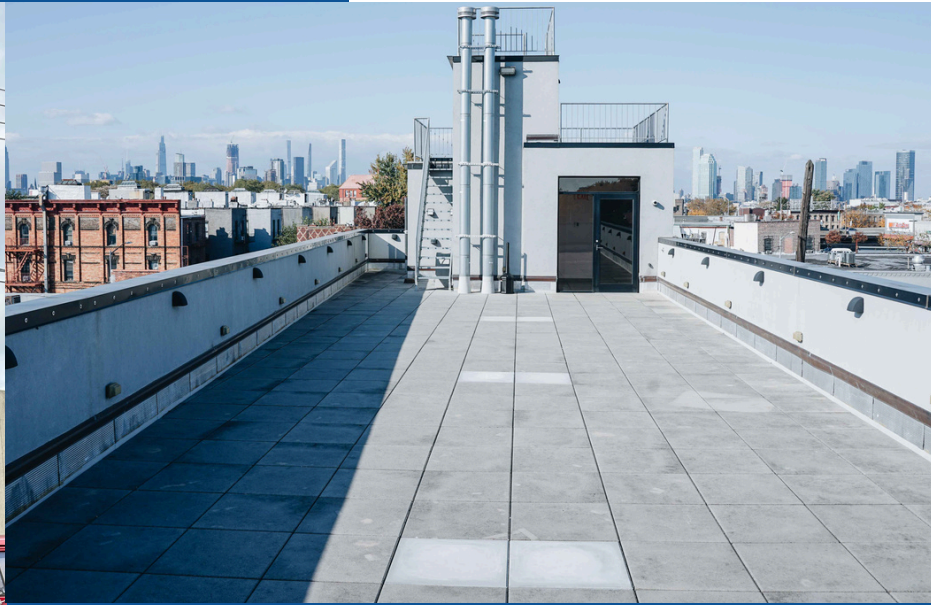




Kalmon Dolgin
AFFILIATES INC.

21
Division Place

Greenpoint, Brooklyn, NY 11222



**FOR MORE INFORMATION
CONTACT EXCLUSIVE BROKER:**

FRED RUFRANO
347-390-1127 (OFFICE)
718-757-2715 (MOBILE)
FRED@KALMONDOLGIN.COM

Kalmon Dolgin Affiliates presents 2,500 SQ. FT. for lease in a newly constructed 2- story FLEX building, in the Greenpoint neighborhood of Brooklyn. 2,500SQ. FT. Building Plus 2,200 SQ.FT. Roof Decks

Asking Price: \$9,500 (\$45 PSF)

PROPERTY FEATURES:

- 2500 Sq. Ft. Total
- 1,000 Sq Ft Ground Floor
- 1,500 Sq.Ft. Second Floor
- Fully Air Conditioned
- Passenger Elevator to all floors
- High Ceilings
- Handicap Bathrooms
- Brand New Construction
- Graham Avenue "L" Train
- 1 Large Drive In Door
- Long Lease Available

IDEAL USES:

Commercial Space, Office, Art Gallery/Studio, Artist Workshop, Flex space for events or any creative use.



101 RICHARDSON ST. | BROOKLYN, NY 11211

718.388.7700

WWW.KALMONDOLGIN.COM

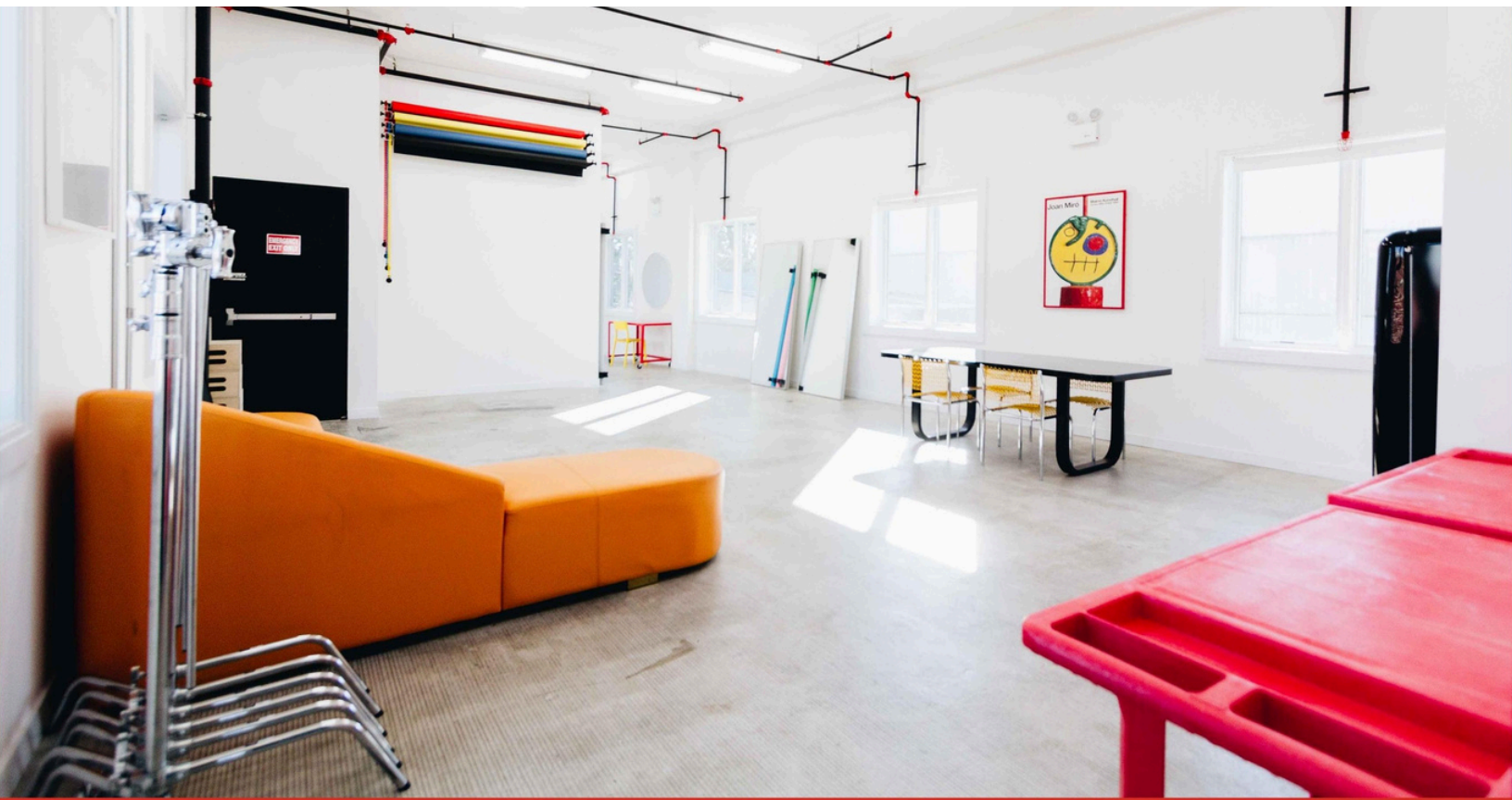
All information furnished regarding property for sale or rental is from sources deemed reliable but no warranty or representation is made as to accuracy thereof and same is submitted subject to error omissions, change of price rental or other conditions, prior sales, lease or withdraw without notice.



Kalmon Dolgin
AFFILIATES INC.

21
Division Place
Greenpoint, Brooklyn, NY 11222

ADDITIONAL PHOTOS





LOCATION DETAILS

Located on Division Place in Greenpoint, Brooklyn bordering Williamsburg and Long Island City, Queens. Easy access to L train at Graham Ave. & BQE. Area is known for a growing population of young professionals drawn to tree-lined streets and the family friendly atmosphere. This mixed residential and industrial community features a thriving commercial district on Graham Ave, as well as access to large green space at McCarren Park.

