

# FOR LEASE

# KALMON DOLGIN AFFILIATES INC.

**1802 Pacific Street  
Brooklyn, NY 11233**

**24,000 Square Feet**

One Story, High Ceiling Corner Building  
with Wide Column Spans, Heavy Power  
with Available Parking and Subway  
Access.

## BUILDING FEATURES

- **21'** Ceiling Height
- **WIDE 50' X 30'** Column Spans
- Heavy - **1,500 Amps** - Power
- 2 Drive In Doors
- 2,000 Square Foot Office Space
- Fully Sprinklered
- Gas Heat

Additional 7500 Sq Ft Paved and Fenced Yard Available

**Three Blocks to The A & C Subway Lines**

Perfect for Manufacturing, Warehouse, Distribution, or Flex Use.

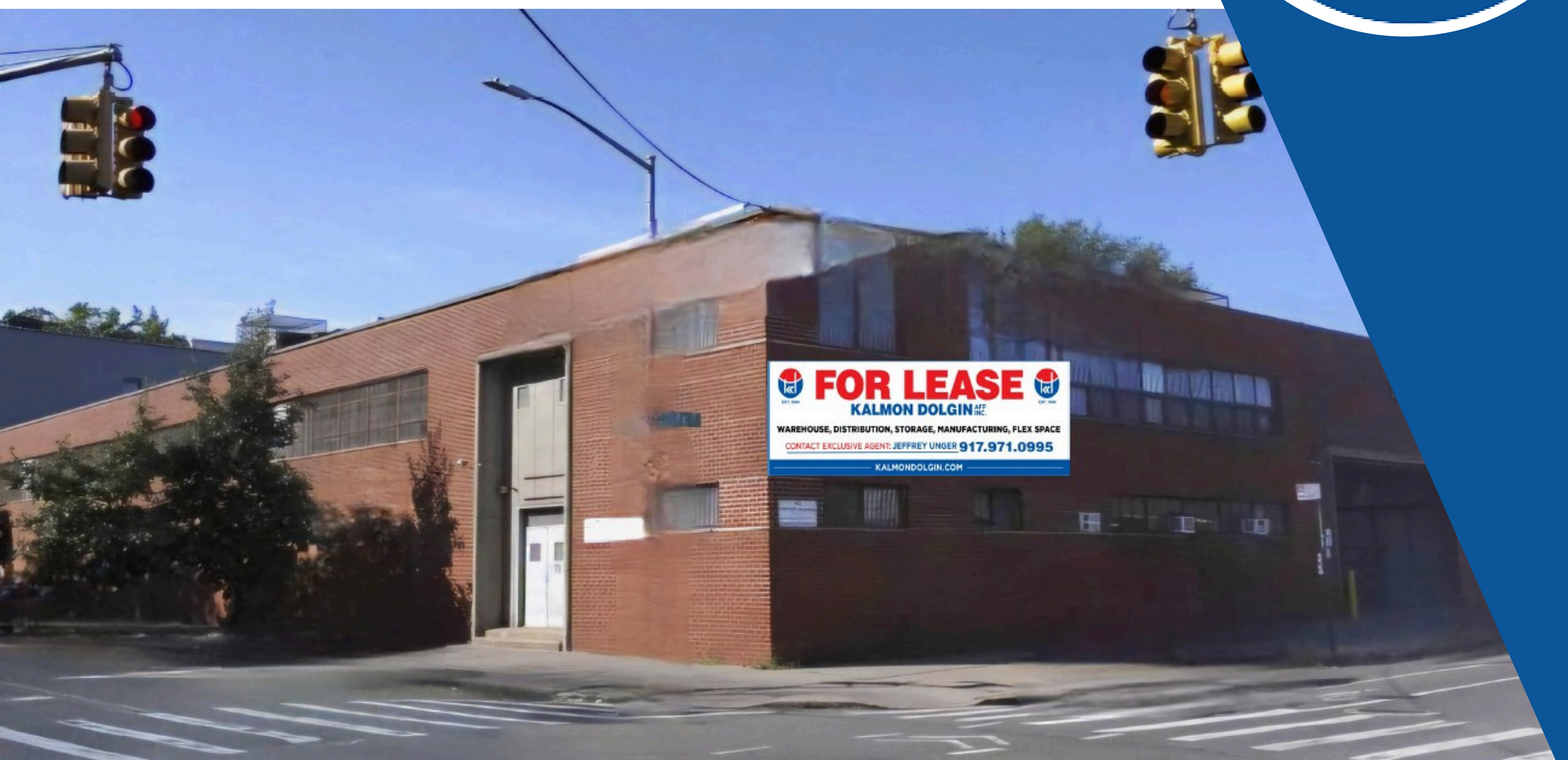
101 RICHARDSON STREET  
BROOKLYN , NEW YORK 11211  
718 388 7700  
[www.kalmondolgin.com](http://www.kalmondolgin.com)

**CONTACT EXCLUSIVE BROKER:**

**JEFFREY UNGER**

**347-390-1114**

**[junger@kalmondolgin.com](mailto:junger@kalmondolgin.com)**



**FOR LEASE**  
KALMON DOLGIN AFFILIATES INC.  
WAREHOUSE, DISTRIBUTION, STORAGE, MANUFACTURING, FLEX SPACE  
CONTACT EXCLUSIVE AGENT: JEFFREY UNGER 917.971.0995  
[KALMONDOLGIN.COM](http://KALMONDOLGIN.COM)