

460 Troutman St Brooklyn, NY 11237

18,800 Sf Warehouse And Manufacturing Building With 180' Frontage



FOR SALE OR LEASE

For More Information Please Contact Our Office

Isaac Deutsch | 347.390.1140
ideutsch@kalmondolgin.com

Neil Dolgin | 718.388.2331
nei@kalmondolgin.com



Kalmon Dolgin
AFFILIATES INC.

460 Troutman St Brooklyn, NY 11237

18,800 Sf Warehouse And Manufacturing Building With 180' Frontage



- The Bushwick's Troutman Street area is a vibrant hub of creativity and culture, showcasing diverse art, lively street events, and a strong sense of community among residents.
- The building is fully HVAC-equipped and climate-controlled year-round, ensuring optimal temperature, air quality, and comfort in all seasons.
- The building has minimal columns, making it perfect for various uses, including retail, industrial, and distribution operations.
- Excellent accessibility with nearby L and M subway lines, multiple bus routes, high walkability, and strong bike infrastructure, making it ideal for retail, industrial, and distribution uses.

Please contact our office for more information.

18,800

SQARE FEET

M1-1 (Factory - Light Manufacturing)

ZONING

187 ft x 99 ft

BUILDING DIMENSIONS

BUSHWICK

NEIGHBORHOOD

Property Information

Block / Lot Lot	3190 / 12	Drive-Ins	4
Lot Dimensions	187 ft x 99	Gate Clearance	'19
Lot Sq. Ft.	18,800 ft	Property Tax (Aprox.)	\$70,000
Building Dimensions	187 ft x 99	Tax Class Assessment (22/23)	919,800
Stories	1		
Ceilings	16'-19'		
Power	400 Amps		
	3 Phase		

FOR SALE OR LEASE

For More Information Please Contact Our Office

Isaac Deutsch | 347.390.1140
ideutsch@kalmondolgin.com

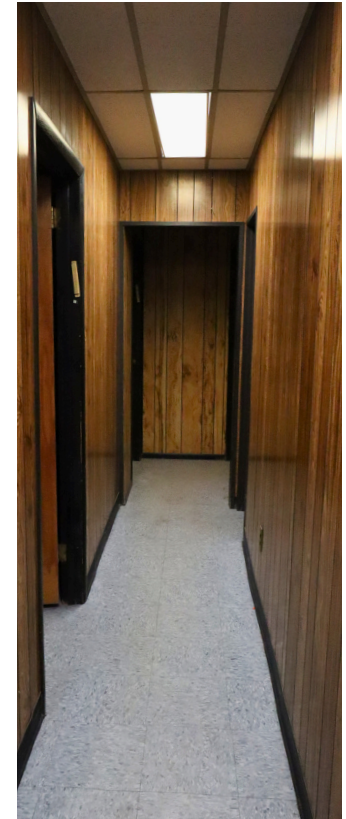
Neil Dolgin | 718.388.2331
neil@kalmondolgin.com



Kalmon Dolgin
AFFILIATES INC.

460 Troutman St Brooklyn, NY 11237

18,800 Sf Warehouse And Manufacturing Building With 180' Frontage



FOR SALE OR LEASE

For More Information Please Contact Our Office

Isaac Deutsch | 347.390.1140
ideutsch@kalmondolgin.com

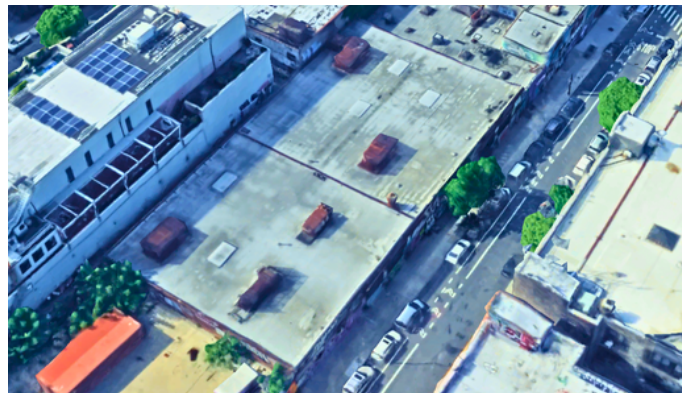
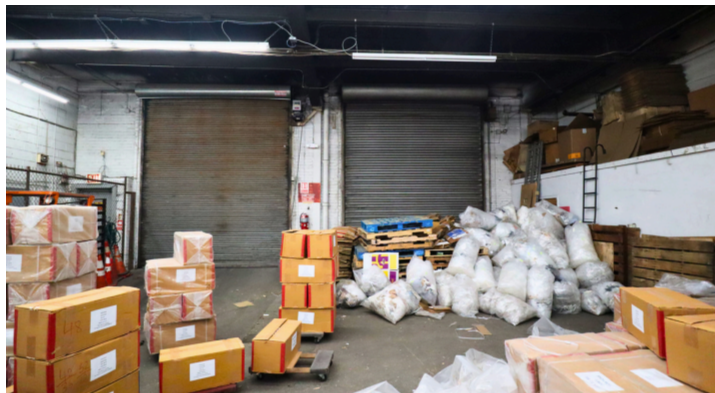
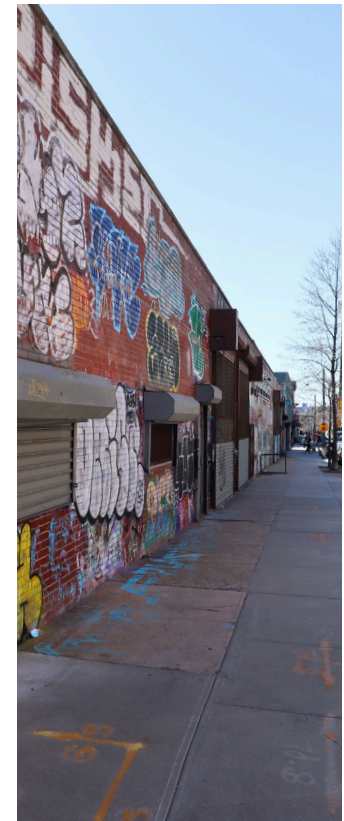
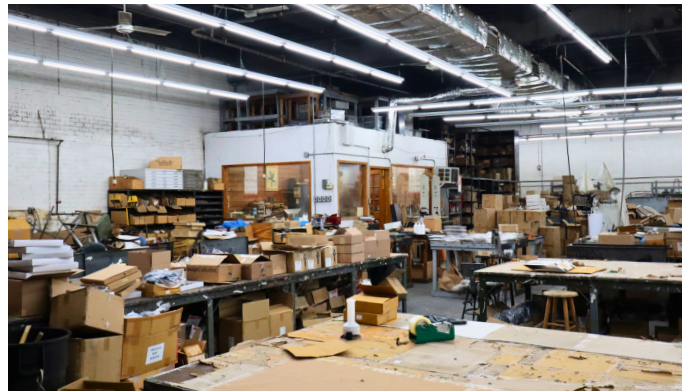
Neil Dolgin | 718.388.2331
neil@kalmondolgin.com



Kalmon Dolgin
AFFILIATES INC.

460 Troutman St Brooklyn, NY 11237

18,800 Sf Warehouse And Manufacturing Building With 180' Frontage



FOR SALE OR LEASE

For More Information Please Contact Our Office

Isaac Deutsch | 347.390.1140
ideutsch@kalmondolgin.com

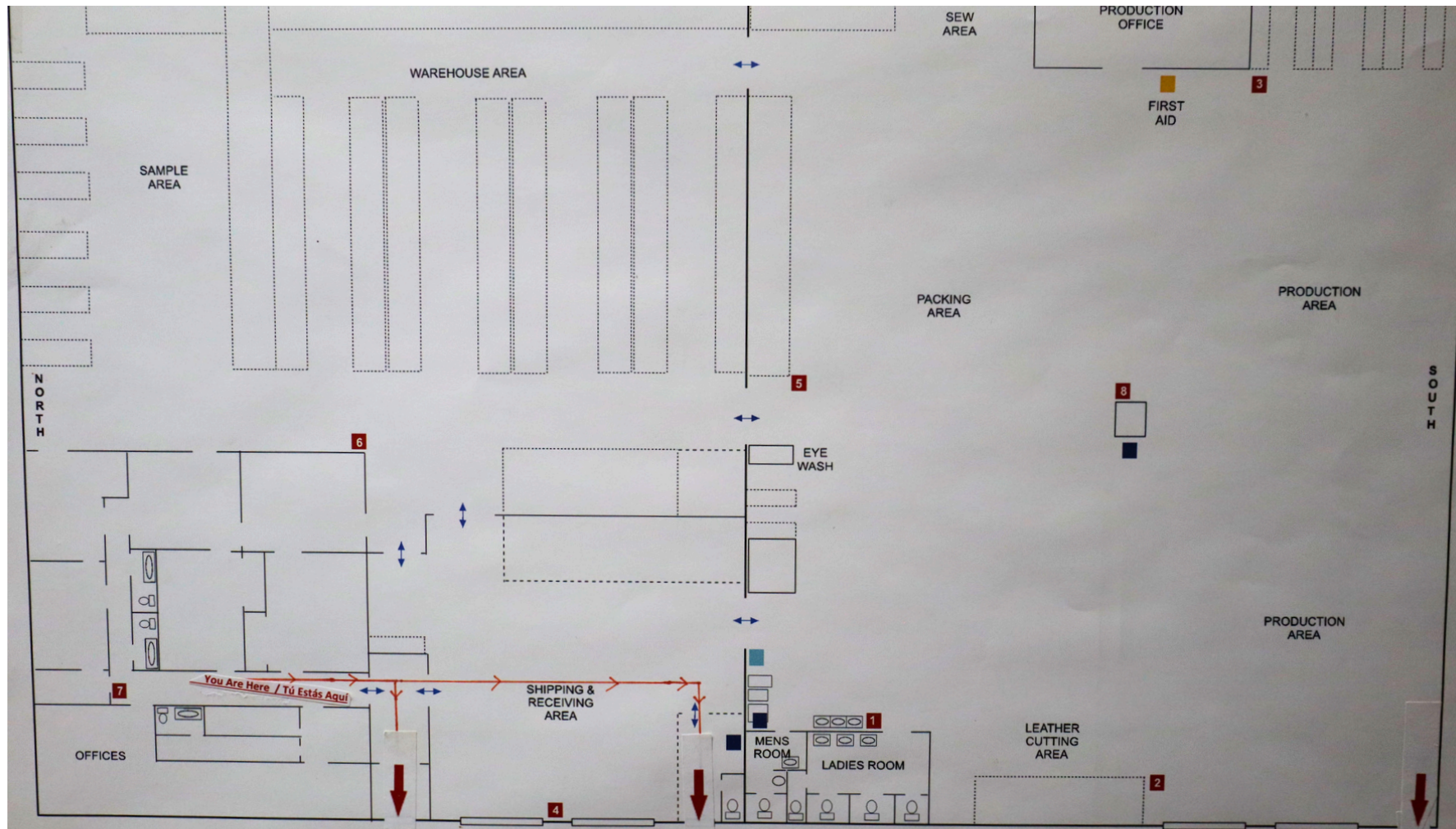
Neil Dolgin | 718.388.2331
nei@kalmondolgin.com



Kalmon Dolgin
AFFILIATES INC.

460 Troutman St Brooklyn, NY 11237

18,800 Sf Warehouse And Manufacturing Building With 180' Frontage



FOR SALE OR LEASE

For More Information Please Contact Our Office

Isaac Deutsch | 347.390.1140
ideutsch@kalmondolgin.com

Neil Dolgin | 718.388.2331
neil@kalmondolgin.com



Kalmon Dolgin
AFFILIATES INC.