

434  
Johnson Avenue  
NY, 11237



**Kalmon Dolgin**  
AFFILIATES INC.

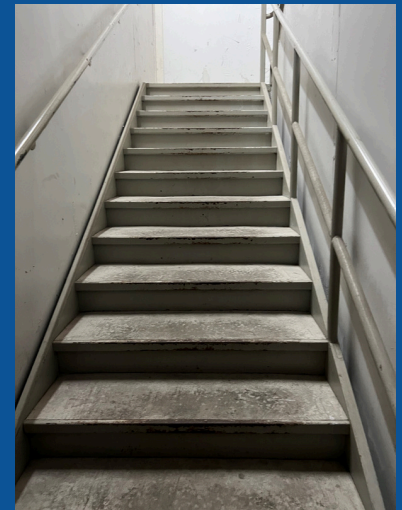
## Industrial Warehouse for Lease in Brooklyn



This two story Industrial warehouse located in the thriving Bushwick neighborhood is the perfect space for all of your industrial and manufacturing needs. Can suitable for general or food manufacturing, Industrial use, or as a storage warehouse. Property features include a drive in, 24' high ceilings, with 5,000 SF space on the ground floor and 2,000 SF on the second floor, totaling at 7,000SF. Location is close to many restaurants, cafes, and stores. Minutes from the Morgan Avenue L Station for easy access to Manhattan.



**Property Features**  
**24' Ceiling**  
**Drive In**  
**5,000 SF Ground Floor**  
**2,000 SF Second Floor**



**Pricing  
Available  
Upon  
Request**

**For more information please contact  
Licensed Real Estate Broker:**

**LINDA WONG**  
**(MOBILE) 917-295-3556 //**  
**(OFFICE) 347-390-1137**  
**LINDAWONG168@AOL.COM**



101 RICHARDSON ST. | BROOKLYN, NY 11211

718.388.7700

WWW.KALMONDOLGIN.COM

All information furnished regarding property for sale or rental is from sources deemed reliable but no warranty or representation is made as to accuracy thereof and same is submitted subject to error omissions, change of price rental or other conditions, prior sales, lease or withdraw without notice.