

434
Johnson Avenue
NY, 11237



Kalmon Dolgin
AFFILIATES INC.

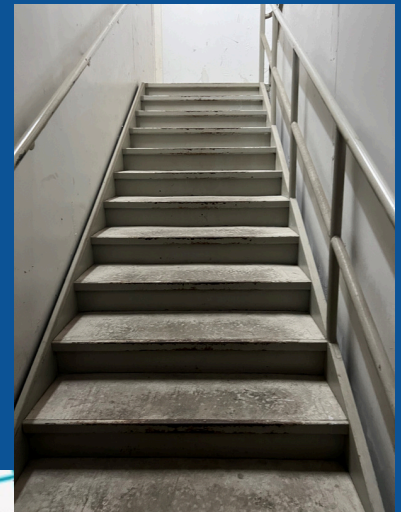
Industrial Warehouse for Lease in Brooklyn



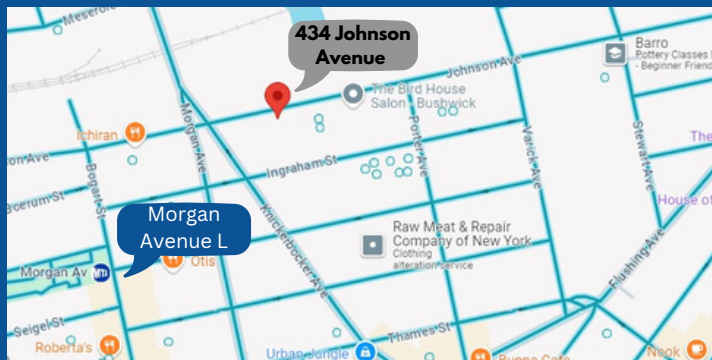
This two story Industrial warehouse located in the thriving Bushwick neighborhood is the perfect space for all of your industrial and manufacturing needs. Can suitable for general or food manufacturing, Industrial use, or as a storage warehouse. Property features include a drive in, 24' high ceilings, with 5,000 SF space on the ground floor and 2,000 SF on the second floor, totaling at 7,000SF. Location is close to many restaurants, cafes, and stores. Minutes from the Morgan Avenue L Station for easy access to Manhattan.



Property Features
24' Ceiling
Drive In
5,000 SF Ground Floor
2,000 SF Second Floor



**Pricing
Available
Upon
Request**



**Located near
Morgan Avenue
L Station**

**For more information please contact
Licensed Real Estate Broker:**

LINDA WONG
(MOBILE) 917-295-3556 // (OFFICE) 347-390-1137
LINDAWONG168@AOL.COM