



Kalmon Dolgin
AFFILIATES INC.

63-17
Metropolitan Ave.
Middle Village, NY 11379



Kalmon Dolgin Affiliates presents for lease 1,200 SF located on heavily trafficked Metropolitan Avenue, in the Middle Village neighborhood. This location provides high exposure with over 50,000 vehicles passing by daily. Currently a fully built out therapist office. Convenient access to public transportation with bus at the door and M train at Metropolitan Ave.

PROPERTY FEATURES:

- 1,200 SF GROUND FLOOR PLUS FULL BASEMENT**
- CONDITION: FULLY BUILT OUT**
- 4 OFFICE/ EXAM ROOMS**
- HVAC**
- LEGAL HANDICAP ACCESS RAMP**
- IDEAL USAGE:**
- MEDICAL PRACTICE - OFFICE SPACE**
- RETAIL - EDUCATIONAL PROGRAM**
- DAY CARE - THERAPY**



FOR MORE INFORMATION CONTACT EXCLUSIVE BROKER:

FRED RUFRANO
347-390-1127 (Office Direct)
FRED@KALMONDOLGIN.COM



101 RICHARDSON ST. | BROOKLYN, NY 11211

718.388.7700

WWW.KALMONDOLGIN.COM

All information furnished regarding property for sale or rental is from sources deemed reliable but no warranty or representation is made as to accuracy thereof and same is submitted subject to error omissions, change of price rental or other conditions, prior sales, lease or withdraw without notice.

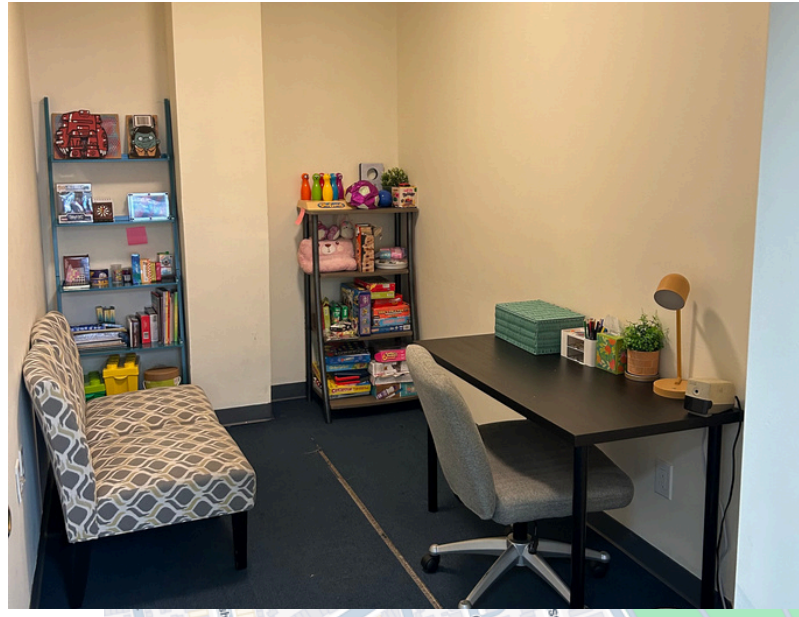


Kalmon Dolgin

AFFILIATES INC.

63-17
Metropolitan Ave.
Middle Village, NY 11379

ADDITIONAL PHOTOS



MINUTES TO L.I.E. / B.Q.E. / QUEENSBORO & ALL OF NYC!



101 RICHARDSON ST. | BROOKLYN, NY 11211

FRED RUFRANO

FRED@KALMONDOLGIN.COM

All information furnished regarding property for sale or rental is from sources deemed reliable but no warranty or representation is made as to accuracy thereof and same is submitted subject to error omissions, change of price rental or other conditions, prior sales, lease or withdraw without notice.